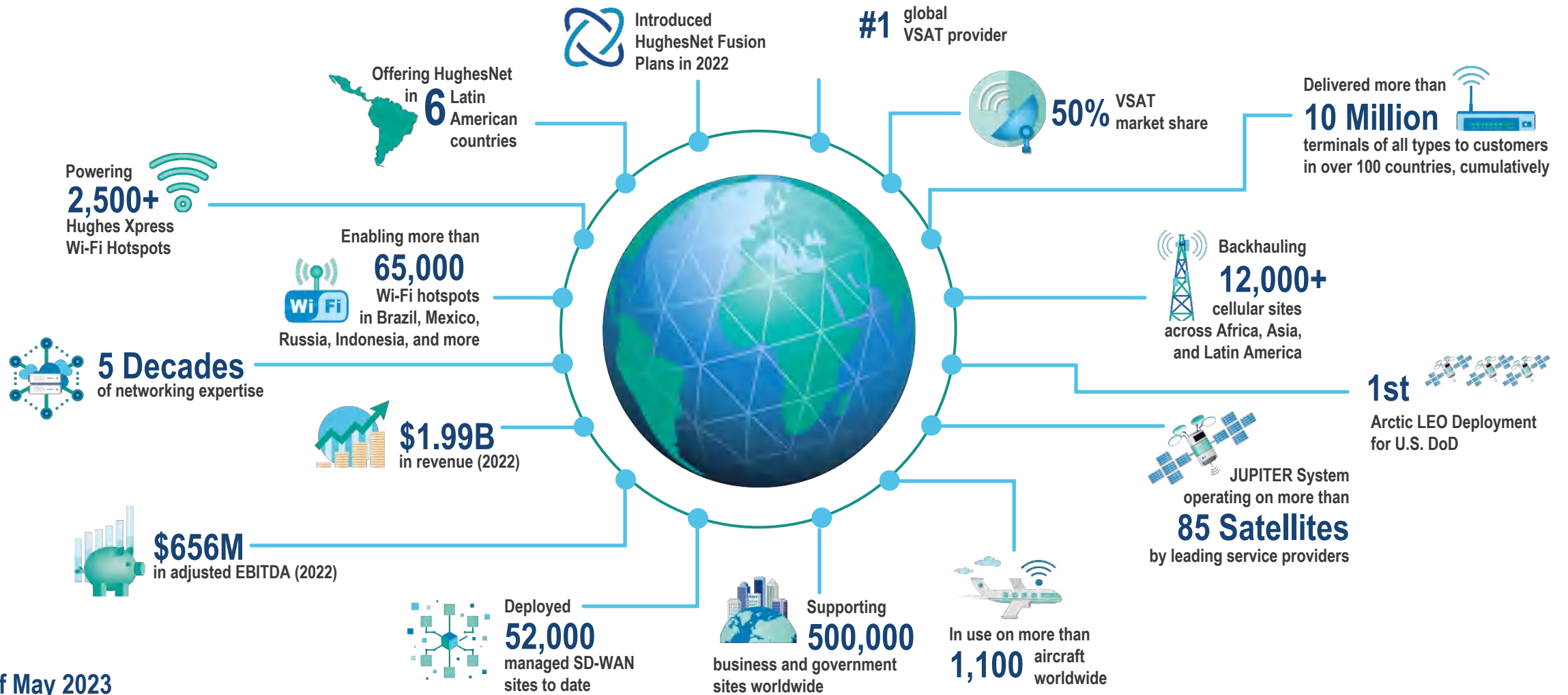




**HUGHES**  
An EchoStar Company

Powering the  
**CONNECTED FUTURE**

# Business Overview



# Hughes GEO Satellite Solutions for Purpose-built & Flexible HTS



## Hughes JUPITER™ 3 Satellite

~1 Tbps over the Americas  
Enabling up to 100 Mbps service plans



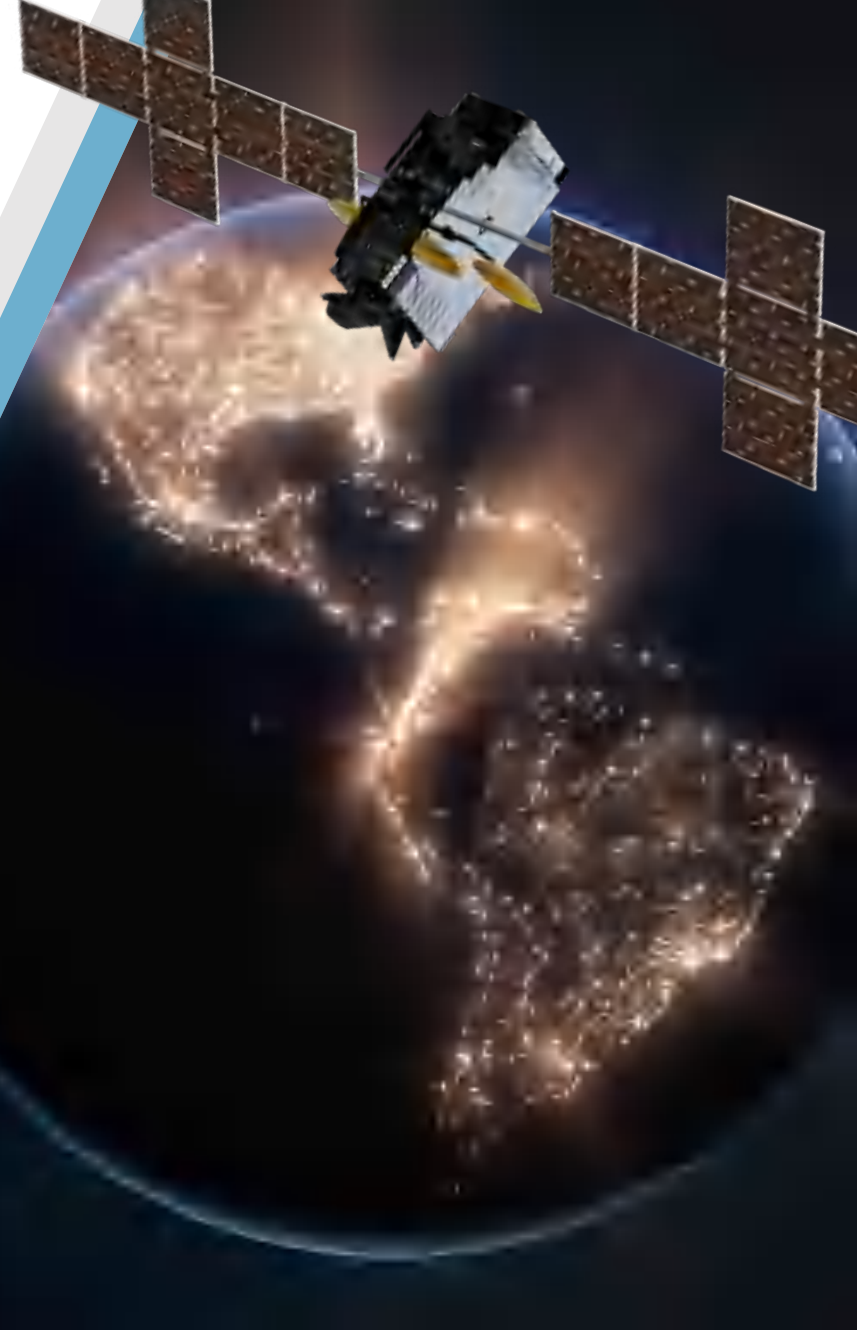
## JUPITER System Series 3 already in Service

Eutelsat KONNECT, SES 17



## JUPITER System in Use

Across Indonesia, Malaysia



# Hughes JUPITER™ System



High Capacity



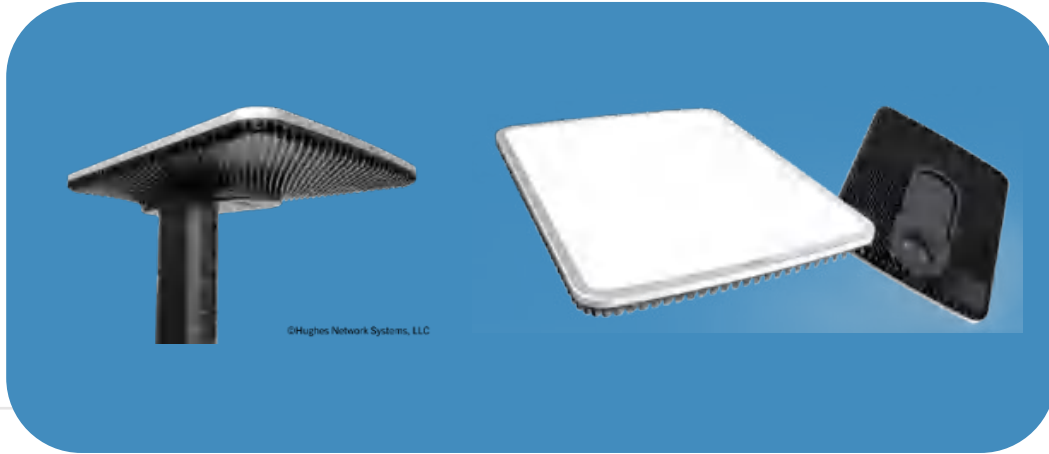
Return Channel ACM



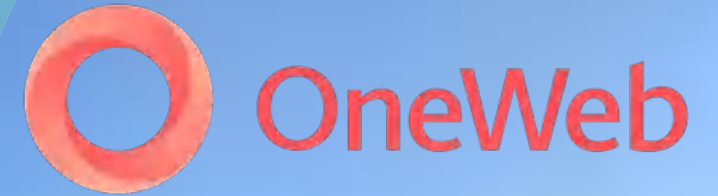
Dynamic Return Channel



# Hughes LEO Terminal



- Low profile with no moving parts
- Low power and light weight
- 195/32 Mbps speeds
- Fixed or mobile



- 44 gateways engineered by Hughes
- Delivering 24/7 operational support for the OneWeb network
- Advanced AI management capabilities

# Hughes Fusion



**In U.S. with HughesNet Fusion™**



**Combining high-capacity GEO satellite with low latency LTE**



**Now available to operators worldwide**  
Multipath gateways, devices, network management

**High-speed,  
low-latency  
Internet**

Satellite for bulk and  
non-latency sensitive data

LTE for latency  
sensitive data



# EchoStar IoT Initiatives



**EchoStar Mobile Pan-European LoRa network**  
Seamless S-band and terrestrial roaming



**EchoStar Lyra™ 28-Satellite Constellation**  
Under construction for global 'store & forward' IoT



**On the Path to Global S-band 5G NTN System**  
Wideband, direct-to-device services



Agritech



Connected vehicles



Industrial IoT



Fisheries



Smart-grid monitoring



Mining